

ISARIA

CONNECT



Online application for
central data management

All the important information in one place

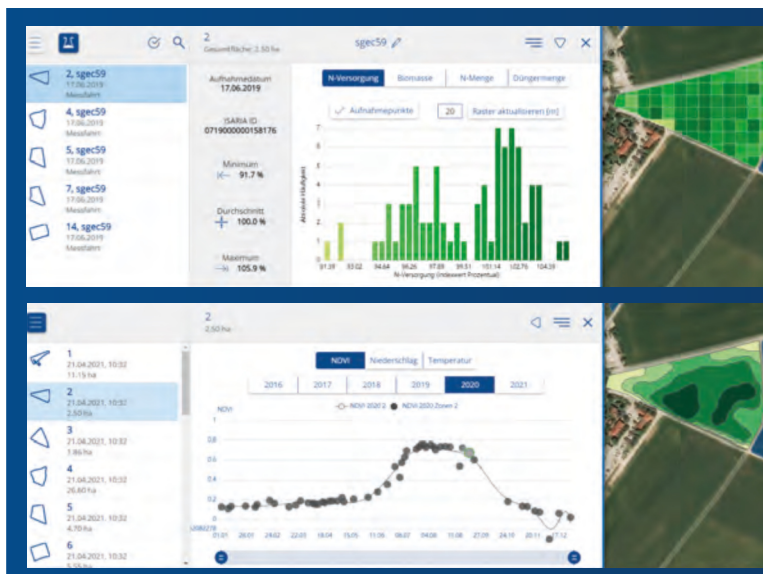


Smart Farming makes farmers' work easier with digital innovations and redefines economic and ecological limits. It produces a large volume of data. ISARIA CONNECT is the online application for intelligent data management and provides an easy and free introduction to smart farming.

Centralised management of data is becoming increasingly important. ISARIA CONNECT helps agricultural businesses and service providers to manage site-specific work more efficiently and to maintain a good overview. The platform features easy and intuitive operation and automates data processing and documentation. With numerous innovative functions, ISARIA CONNECT is extremely flexible and covers a broad range of applications.

Functions

- Convenient job management for ISARIA sensor-based systems
- Management, analysis and visualisation of data from ISARIA scans
- Automatic documentation of site-specific actions
- Biomass monitoring based on satellite images, monitoring of temperature and precipitation trends
- Easy calculation of application maps based on satellite maps or previous ISARIA scans
- Calculation of application maps for fertilisation of winter rape and potatoes using expert system
- Online data exchange between ISARIA PRO Active and ISARIA CONNECT possible



Convenient data management and analysis for completed scans with ISARIA sensor-based systems.

Documentation of site-specific actions is also possible with just a few clicks. Based on ISARIA scans, different modules can be used to calculate application maps.

Biomass monitoring based on satellite images.

As well as tracking biomass development, temperature and precipitation trends and data for recent years can also be viewed and compared.

Advantages of ISARIA CONNECT at a glance

- Easy and free introduction to smart farming
- Intuitive and easy operation
- Convenient job management for the ISARIA systems from your own home
- Easy integration of yield potential maps for sensor-based fertiliser application
- Easy transfer of job file to the ISARIA terminal (online or via USB)
- Reading back measurement and application data for evaluation and documentation
- Automatic creation of a clearly arranged report (e.g. PDF) for documentation purposes
- Convenient creation of application maps based on satellite images or ISARIA scans, including for fertilisation of winter rape and potatoes using an expert system

History

Fritzmeier has been synonymous with progress in agriculture since 1926.

Initially established as a saddlery, the company provided farmers with increased comfort when working with a full-suspension tractor seat and the first tarpaulin cover. A further revolutionary step came in the 1960s with the development of the rollover bar for tractors. Fritzmeier established itself as the world market leader for construction machinery and industrial vehicles.

Progress is continuing where it all began. Since 2012, Fritzmeier Umwelttechnik has been developing innovative solutions for people and the environment in the original old saddlery. High precision sensor technology is combined with cutting-edge crop farming know-how to create a single system: ISARIA - your system for intelligent crop management.





Intelligent technologies for optimum yield

FCT

FIELD CRAFT TECHNOLOGIES

— PERFECTING PRECISION APPLICATIONS —

www.fieldcraft-tech.co.uk

info@fieldcraft-tech.co.uk

07774 043 344

ISARIA
Efficiently into the future

Fritzmeier Umwelttechnik GmbH & Co. KG
Dorfstraße 7
85653 Großhelfendorf, Germany

Tel.: +49 (0)8095 87339-400
E-Mail: info@isaria-digitalfarming.com

www.isaria-digitalfarming.com

